

Responsável Técnico
ENG^o AGRIMENSOR ELIZANDRO DE FÁVERI
 CREA-SC – N^o 057.520-3

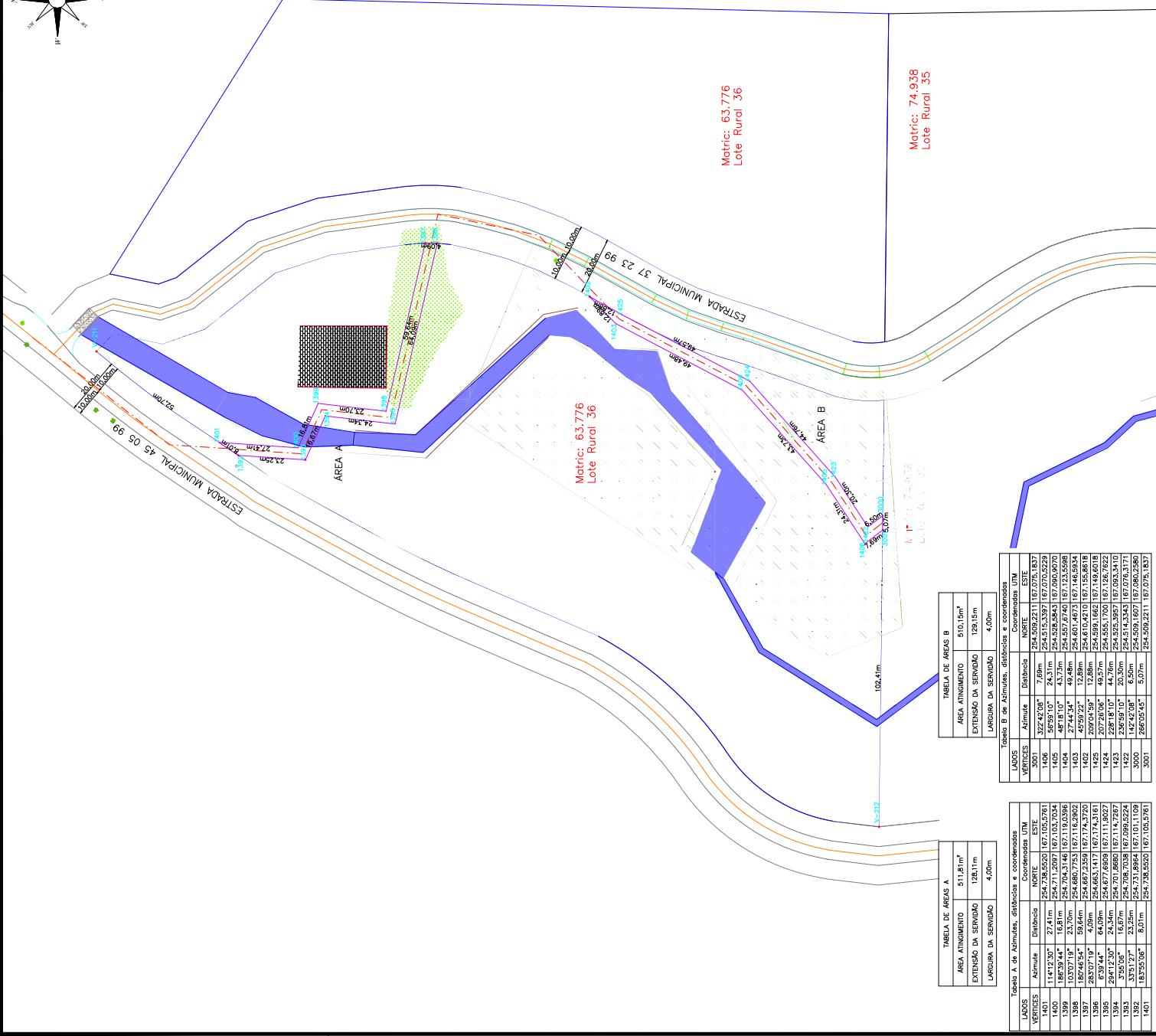
Contratante
SAMAE - CAYLAS DO SUL
CNPJ: 88.830/0001-39

SAVINGS
The water you save has 34 savings
Call 800-555-5555

PROJETO/UNIDADE CONSTRUTIVA:	FAVIA DE SERVIÇÃO DA REDE COLETOIRA DE ESGOTO		
DESCRIÇÃO:	Natalino Romano Scarot e outros CPF: 033.373.830-68		
DESCRIÇÃO:	SISTEMA PLANO TOPOGRÁFICO LOCAL		
Nº DO MARCO:	555	MARCO DE REF. DA ROUNGE	
Y:	254.299,582m	X:	168.935,744m
SISTEMA UTM			
MC: -51° Sul			
N: 6.774.987,367m	E:	493.305,366m	
MODELO:	MARSSOLA / OS	ORIGEM:	63,76 / Sul - 2°
DATA:	19/10/2022		
FECHA:	1 / 1.000		
DESENHO:	11956352		
ARTE:	01/01		

ELIZANDRO DE FÁVERI
ENGENHEIRO AGRIMENSOR – CREA-SC – N° 057520-3

VINICIUS MARCOS LUGONI
ENGENHEIRO CIVIL – CREA-SC – N° 151592-4



ÁREA ATINGIMENTO	510,15m²
EXTENSÃO DA SERVIÇÃO	129,15m
LARGURA DA SERVIÇÃO	4,00m

LADOS	Ásima		Dobesko		Coordenadas UTM	
	NORTE	ESTE	NORTE	ESTE	NORTE	ESTE
3001	254.509.221	116.075.183	254.509.221	116.075.183	254.509.221	116.075.183
1406	254.515.397	167.070.529	254.515.397	167.070.529	254.515.397	167.070.529
1405	254.526.347	167.090.907	254.526.347	167.090.907	254.526.347	167.090.907
1404	254.537.462	167.123.559.938	254.537.462	167.123.559.938	254.537.462	167.123.559.938
1403	254.548.747	167.146.599.34	254.548.747	167.146.599.34	254.548.747	167.146.599.34
1402	254.560.467	167.173.585.817	254.560.467	167.173.585.817	254.560.467	167.173.585.817
1401	254.572.467	167.200.599.34	254.572.467	167.200.599.34	254.572.467	167.200.599.34
1400	254.584.467	167.227.602.612	254.584.467	167.227.602.612	254.584.467	167.227.602.612
1399	254.596.467	167.254.615.171	254.596.467	167.254.615.171	254.596.467	167.254.615.171
1398	254.608.467	167.281.628.711	254.608.467	167.281.628.711	254.608.467	167.281.628.711
1397	254.620.467	167.308.641.260	254.620.467	167.308.641.260	254.620.467	167.308.641.260
1396	254.632.467	167.335.654.711	254.632.467	167.335.654.711	254.632.467	167.335.654.711
1395	254.644.467	167.362.667.260	254.644.467	167.362.667.260	254.644.467	167.362.667.260
1394	254.656.467	167.389.680.711	254.656.467	167.389.680.711	254.656.467	167.389.680.711
1393	254.668.467	167.416.693.260	254.668.467	167.416.693.260	254.668.467	167.416.693.260
1392	254.680.467	167.443.706.711	254.680.467	167.443.706.711	254.680.467	167.443.706.711
1391	254.692.467	167.470.720.260	254.692.467	167.470.720.260	254.692.467	167.470.720.260
1390	254.704.467	167.497.733.711	254.704.467	167.497.733.711	254.704.467	167.497.733.711
1389	254.716.467	167.524.746.260	254.716.467	167.524.746.260	254.716.467	167.524.746.260
1388	254.728.467	167.551.759.711	254.728.467	167.551.759.711	254.728.467	167.551.759.711
1387	254.740.467	167.578.772.260	254.740.467	167.578.772.260	254.740.467	167.578.772.260
1386	254.752.467	167.605.785.711	254.752.467	167.605.785.711	254.752.467	167.605.785.711
1385	254.764.467	167.632.798.260	254.764.467	167.632.798.260	254.764.467	167.632.798.260
1384	254.776.467	167.659.811.711	254.776.467	167.659.811.711	254.776.467	167.659.811.711
1383	254.788.467	167.686.824.260	254.788.467	167.686.824.260	254.788.467	167.686.824.260
1382	254.800.467	167.713.837.711	254.800.467	167.713.837.711	254.800.467	167.713.837.711
1381	254.812.467	167.740.850.260	254.812.467	167.740.850.260	254.812.467	167.740.850.260
1380	254.824.467	167.767.863.711	254.824.467	167.767.863.711	254.824.467	167.767.863.711
1379	254.836.467	167.794.876.260	254.836.467	167.794.876.260	254.836.467	167.794.876.260
1378	254.848.467	167.821.889.711	254.848.467	167.821.889.711	254.848.467	167.821.889.711
1377	254.860.467	167.848.902.260	254.860.467	167.848.902.260	254.860.467	167.848.902.260
1376	254.872.467	167.875.915.711	254.872.467	167.875.915.711	254.872.467	167.875.915.711
1375	254.884.467	167.902.928.260	254.884.467	167.902.928.260	254.884.467	167.902.928.260
1374	254.896.467	167.930.000.711	254.896.467	167.930.000.711	254.896.467	167.930.000.711
1373	254.908.467	167.957.013.260	254.908.467	167.957.013.260	254.908.467	167.957.013.260
1372	254.920.467	167.984.026.711	254.920.467	167.984.026.711	254.920.467	167.984.026.711
1371	254.932.467	168.011.039.260	254.932.467	168.011.039.260	254.932.467	168.011.039.260
1370	254.944.467	168.038.052.711	254.944.467	168.038.052.711	254.944.467	168.038.052.711
1369	254.956.467	168.065.065.260	254.956.467	168.065.065.260	254.956.467	168.065.065.260
1368	254.968.467	168.092.078.711	254.968.467	168.092.078.711	254.968.467	168.092.078.711
1367	254.980.467	168.119.091.260	254.980.467	168.119.091.260	254.980.467	168.119.091.260
1366	254.992.467	168.146.104.711	254.992.467	168.146.104.711	254.992.467	168.146.104.711
1365	255.004.467	168.173.117.260	255.004.467	168.173.117.260	255.004.467	168.173.117.260
1364	255.016.467	168.200.130.711	255.016.467	168.200.130.711	255.016.467	168.200.130.711
1363	255.028.467	168.227.143.260	255.028.467	168.227.143.260	255.028.467	168.227.143.260
1362	255.040.467	168.254.156.711	255.040.467	168.254.156.711	255.040.467	168.254.156.711
1361	255.052.467	168.281.169.260	255.052.467	168.281.169.260	255.052.467	168.281.169.260
1360	255.064.467	168.308.182.711	255.064.467	168.308.182.711	255.064.467	168.308.182.711
1359	255.076.467	168.335.195.260	255.076.467	168.335.195.260	255.076.467	168.335.195.260
1358	255.088.467	168.362.208.711	255.088.467	168.362.208.711	255.088.467	168.362.208.711
1357	255.100.467	168.389.221.260	255.100.467	168.389.221.260	255.100.467	168.389.221.260
1356	255.112.467	168.416.234.711	255.112.467	168.416.234.711	255.112.467	168.416.234.711
1355	255.124.467	168.443.247.260	255.124.467	168.443.247.260	255.124.467	168.443.247.260
1354	255.136.467	168.470.260.711	255.136.467	168.470.260.711	255.136.467	168.470.260.711
1353	255.148.467	168.497.273.260	255.148.467	168.497.273.260	255.148.467	168.497.273.260
1352	255.160.467	168.524.286.711	255.160.467	168.524.286.711	255.160.467	168.524.286.711
1351	255.172.467	168.551.299.260	255.172.467	168.551.299.260	255.172.467	168.551.299.260
1350	255.184.467	168.578.312.711	255.184.467	168.578.312.711	255.184.467	168.578.312.711
1349	255.196.467	168.605.325.260	255.196.467	168.605.325.260	255.196.467	168.605.325.260
1348	255.208.467	168.632.338.711	255.208.467	168.632.338.711	255.208.467	168.632.338.711
1347	255.220.467	168.659.351.260	255.220.467	168.659.351.260	255.220.467	168.659.351.260
1346	255.232.467	168.686.364.711	255.232.467	168.686.364.711	255.232.467	168.686.364.711
1345	255.244.467	168.713.377.260	255.244.467	168.713.377.260	255.244.467	168.713.377.260
1344	255.256.467	168.740.390.711	255.256.467	168.740.390.711	255.256.467	168.740.390.711
1343	255.268.467	168.767.403.260	255.268.467	168.767.403.260	255.268.467	168.767.403.260
1342	255.280.467	168.794.416.711	255.280.467	168.794.416.711	255.280.467	168.794.416.711
1341	255.292.467	168.821.429.260	255.292.467	168.821.429.260	255.292.467	168.821.429.260
1340	255.304.467	168.848.442.711	255.304.467	168.848.442.711	255.304.467	168.848.442.711
1339	255.316.467	168.875.455.260	255.316.467	168.875.455.260	255.316.467	168.875.455.260
1338	255.328.467	168.902.468.711	255.328.467	168.902.468.711	255.328.467	168.902.468.711
1337	255.340.467	168.929.481.260	255.340.467	168.929.481.260	255.340.467	168.929.481.260
1336	255.352.467	168.956.494.711	255.352.467	168.956.494.711	255.352.467	168.956.494.711
1335	255.364.467	168.983.507.260	255.364.467	168.983.507.260	255.364.467	168.983.507.260
1334	255.376.467	169.010.520.711	255.376.467	169.010.520.711	255.376.467	169.010.520.711
1333	255.388.467	169.037.533.260	255.388.467	169.037.533.260	255.388.467	169.037.533.260
1332	255.400.467	169.064.546.711	255.400.467	169.064.546.711	255.400.467	169.064.546.711
1331	255.412.467	169.091.559.260	255.412.467	169.091.559.260	255.412.467	169.091.559.260
1330	255.424.467	169.118.572.711	255.424.467	169.118.572.711	255.424.467	169.118.572.711
1329	255.436.467	169.145.585.260	255.436.467	169.145.585.260	255.436.467	169.145.585.260
1328	255.448.467	169.172.598.711	255.448.467	169.172.598.711	255.448.467	169.172.598.711
1327	255.460.467	169.200.611.260	255.460.467	169.200.611.260	255.460.467	169.200.611.260
1326	255.472.467	169.227.624.711	255.472.467	169.227.624.711	255.472.467	169.227.624.711
1325	255.484.467	169.254.637.260	255.484.467	169.254.637.260	255.484.467	169.254.637.260
1324	255.496.467	169.281.650.711	255.496.467	169.281.650.711	255.496.467	169.281.650.711
1323	255.508.467	169.308.663.260	255.508.467	169.308.663.260	255.508.467	169.308.663.260
1322	255.520.467	169.335.676.711	255.520.467	169.335.676.711	255.520.467	169.335.676.711
1321	255.532.467	169.362.689.260	255.532.467	169.362.689.260	255.532.467	169.362.689.260
1320	255.544.467	169.389.702.711	255.544.467	169.389.702.711	255.544.467	169.389.702.711
1319	255.556.467	169.416.715.260	255.556.467	169.416.715.260	255.556.467	169.416.715.260
1318	255.568.467	169.443.728.711	255.568.467	169.443.728.711	255.568.467	169.443.728.711
1317	255.580.467	169.470.741.260	255.580.467	169.470.741.260	255.580.467	169.470.741.260
1316	255.592.467	169.497.754.711	255.592.467	169.497.754.711	255.592.467	169.497.754.711
1315	255.604.467	169.524.767.260	255.604.467	169.524.767.260	255.604.467	169.524.767.260
1314	255.616.467	169.551.780.711	255.616.467	169.551.780.711	255.616.467	169.551.780.711
1313	255.628.467	169.578.793.260	255.628.467	169.578.793.260	255.628.467	169.578.793.260
1312	255.640.467	169.605.806.711	255.640.467	169.605.806.711	255.640.467	169.605.806.711
1311	255.652.467	169.632.819.260	255.652.467	169.632.819.260	255.652.467	169.632.819.260
1310	255.664.467	169.659.832.711	255.664.467	169.659.832.711	255.664.467	169.659.832.711
1309	255.676.467	169.686.845.260	255.676.467	169.686.845.260	255.676.467	169.686.845.260
1308	255.688.467	169.713.858.711	255.688.467	169.713.858.711	255.688.467	169.713.858.711
1307	255.700.467	169.740.871.260	255.700.467	169.740.871.260	255.700.467	169.740.871.260
1306	255.712.467	169.767.884.711	255.712.467	169.767.884.711	255.712.467	169.767.884.

LADOS	Azímute	Distancia	NORTE	ESTE
VERTICES				
1401	141°22'30"	27,41 m	254,738,5520	167,105,5761
1402	140°34'30"	16,61 m	254,711,2099	167,103,7034
1403	140°34'30"	16,61 m	254,704,7345	167,119,0302
1399	130°07'19"	23,70 m	254,680,7515	167,116,2902
1398	180°46'54"	59,64 m	254,660,2359	167,143,5730
1387	283°07'19"	4,03 m	254,667,7020	167,111,9027
1386	6°39'44"	64,00 m	254,677,6920	167,111,9027
1385	294°12'30"	24,43 m	254,701,8880	167,116,7267
1384	3°55'06"	16,67 m	254,708,7038	167,099,5425
1383	335°12'37"	23,20 m	254,731,8984	167,101,1109
1382	18°55'06"	8,01 m	254,738,5520	167,105,5761
1401				